

Bonding – tools

&

consumables

Since more than 30 years we support our customers with our experience. We offer a wide range of Semiconductor Test solutions.

We are covering Bonding machines, Plasma systems, Feeders and all the necessary tools and equipment for it, as well as Test sockets and customized Test solutions for your final or stress Test.

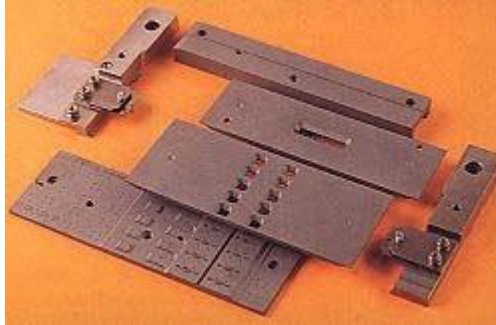
We are Innovative, powerful and reliable.

Your **QUASYS** -Team

Content

DOWNHOLDERSSETS / CLAMPS FOR WIREBONDING.....	3
RUBBER TIPS.....	4
SUCTION CUPS FOR GENERAL PURPOSE	15
RUBBER TIP HOLDER	20
EJECTOR NEEDLE/PIN (CARBIDE, STAINLESS STEEL. CUSTOM MADE, ETC.)	22
WIREHOOK FOR PULLTESTING.....	23
BALLSHEARPIN BSP-XXX.....	26
DIESHEARPIN DSP-XXX.....	28
ABOUT US:.....	30
WE INTRODUCE OURSELVES:.....	31
OUR LOCATIONS:	32

Downholdersets / Clamps for Wirebonding



For ESEC, ASM, K&S, Shinawa

Downholdersets can be manufactured within 2 to 10 workdays, depending on customer needs and availability of the leadframe drawings and samples.

The unit price for standard sets depends on number of Windows. Hardening and Blackening are free second treatment.

Requirements:

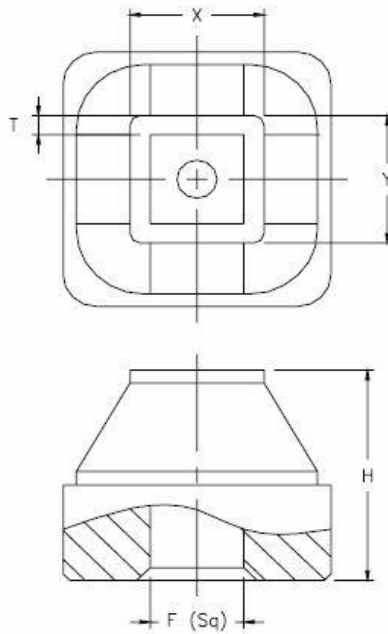
- L/F Drawing in DXF or DWG format (Must)
- Machine type and Model (Must)
- L/F or Substrate sample (Preferred)
- Bonding Diagram (Preferred and Must if multi-wires per lead)

The downholdersets are machined and finished under licence of the wirebonder manufacturer.

Please consider QUASYS as your preferred “Downholderset-supplier”, because we offer exceptionally low prices.

Rubber Tips

Square, RSE-xxx



Type : Square

Material : NBR

T - Wall Thickness

H - Height

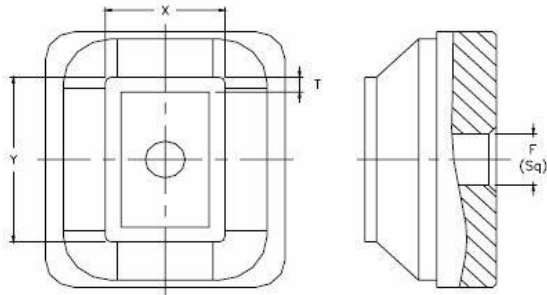
F - Fitting

Standard Part number

Part Number

	Part Number	X		Y		T		H	F
		INCH	MM	INCH	MM	INCH	MM	MM	(SQ)
1	RSE-030016	0.03	0.75	0.03	0.75	0.004	0.10	3.30	1.40
2	RSF-040016	0.04	1.00	0.04	1.00	0.008	0.20	3.30	1.40
3	RSF-050024	0.05	1.25	0.05	1.25	0.008	0.20	3.30	1.40
4	RSF-060024	0.06	1.50	0.06	1.50	0.008	0.20	3.30	1.40
5	RSE-070024	0.07	1.75	0.07	1.75	0.012	0.30	3.30	1.40
6	RSF-080024	0.08	2.00	0.08	2.00	0.012	0.30	3.30	1.40
7	RSF-090024	0.09	2.25	0.09	2.25	0.012	0.30	3.30	1.40
8	RSF-100024	0.10	2.50	0.10	2.50	0.012	0.30	3.30	1.40
9	RSF-120024	0.12	3.00	0.12	3.00	0.012	0.30	3.30	1.40
10	RSF-140024	0.14	3.50	0.14	3.50	0.012	0.30	3.30	1.40
11	RSE-160040	0.16	4.00	0.16	4.00	0.012	0.30	3.30	1.40
12	RSF-180040	0.18	4.50	0.18	4.50	0.012	0.30	3.30	1.40
13	RSF-200040	0.20	5.00	0.20	5.00	0.012	0.30	3.30	1.40
14	RSF-240040	0.24	6.00	0.24	6.00	0.012	0.30	3.30	2.90
15	RSE-280040	0.28	7.00	0.28	7.00	0.012	0.30	3.30	2.90
16	RSF-320040	0.32	8.00	0.32	8.00	0.016	0.40	3.30	2.90
17	RSE-360040	0.36	9.00	0.36	9.00	0.020	0.50	3.30	2.90
18	RSF-400040	0.40	10.00	0.40	10.00	0.020	0.50	3.30	2.90
19	RSE-480040	0.48	12.00	0.48	12.00	0.020	0.50	3.30	2.90

Rectangular, Ratio 1/1.5, RTA-xxx



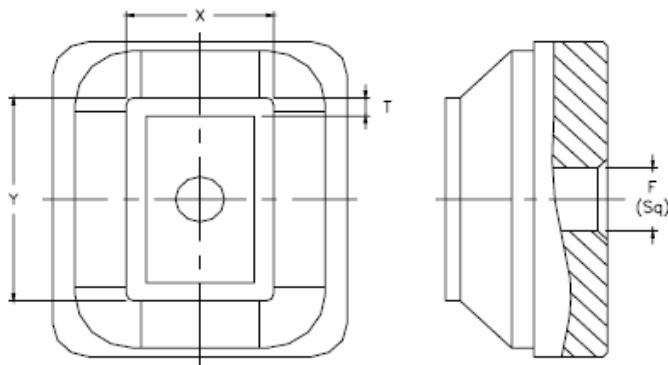
Type : Rectangular
 RTA - Ratio - 1 : 1.5
 RTB - Ratio - 1 : 2
 Material : NBR
 T - Wall Thickness
 H - Height
 F - Fitting

Standard Part number		X		Y		T		H	F
Part	Number	INCH	MM	INCH	MM	INCH	MM	MM	(SQ)
1	RTA-030045	0.030	0.75	0.045	1.15	0.004	0.10	3.30	1.40
2	RTA-040060	0.040	1.00	0.060	1.50	0.006	0.15	3.30	1.40
3	RTA-050075	0.050	1.25	0.075	1.85	0.008	0.20	3.30	1.40
4	RTA-060090	0.060	1.50	0.090	2.25	0.008	0.20	3.30	1.40
5	RTA-070105	0.070	1.75	0.105	2.60	0.008	0.20	3.30	1.40
6	RTA-080120	0.080	2.00	0.120	3.00	0.012	0.30	3.30	1.40
7	RTA-090130	0.090	2.25	0.130	3.25	0.016	0.40	3.30	1.40
8	RTA-100150	0.100	2.50	0.150	3.75	0.016	0.40	3.30	1.40
9	RTA-120180	0.120	3.00	0.180	4.50	0.016	0.40	3.30	1.40
10	RTA-140210	0.140	3.50	0.210	5.25	0.016	0.40	3.30	1.40
11	RTA-160240	0.160	4.00	0.240	6.00	0.020	0.50	3.30	1.40
12	RTA-180270	0.180	4.50	0.270	6.75	0.020	0.50	3.30	1.40
13	RTA-200300	0.200	5.00	0.300	7.50	0.020	0.50	3.30	1.40

Rectangular, Ratio 1/2, RTB-xxx

Standard Part number		X		Y		T		H	F
Part	Number	INCH	MM	INCH	MM	INCH	MM	MM	(SQ)
1	RTB-030060	0.03	0.75	0.06	1.50	0.004	0.10	3.30	1.40
2	RTB-040080	0.04	1.00	0.08	2.00	0.006	0.15	3.30	1.40
3	RTB-050100	0.05	1.25	0.10	2.50	0.006	0.15	3.30	1.40
4	RTB-060120	0.06	1.50	0.12	3.00	0.010	0.25	3.30	1.40
5	RTB-080160	0.08	2.00	0.16	4.00	0.016	0.40	3.30	1.40
6	RTB-090180	0.09	2.25	0.18	4.50	0.016	0.40	3.30	1.40
7	RTB-100200	0.10	2.50	0.20	5.00	0.016	0.40	3.30	1.40
8	RTB-120240	0.12	3.00	0.24	6.00	0.020	0.50	3.30	1.40
9	RTB-140280	0.14	3.50	0.28	7.00	0.020	0.50	3.30	1.40
10	RTB-160320	0.16	4.00	0.32	8.00	0.020	0.50	3.30	1.40
11	RTB-180360	0.18	4.50	0.36	9.00	0.020	0.50	3.30	2.90
12	RTB-200400	0.20	5.00	0.40	10.00	0.020	0.50	3.30	2.90

Rectangular, Non-Standard Ratio, RST-xxx

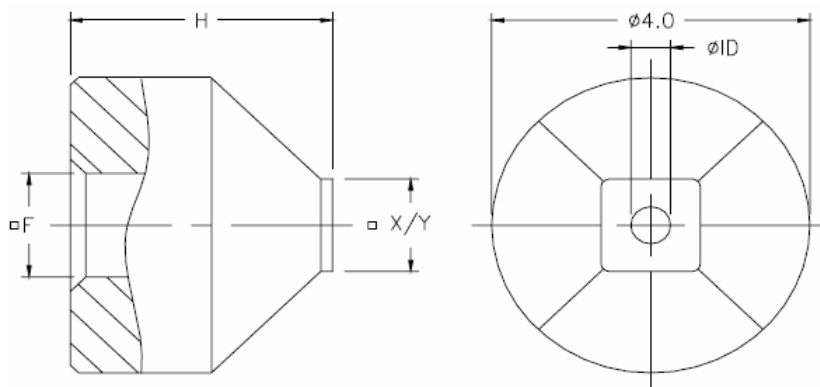


Type : Rectangular
RST - Non Standard Ratio

Material : NBR
T - Wall Thickness
H - Height
F - Fitting

Standard Part number	Part Number	X		Y		T		H	F
		INCH	MM	INCH	MM	INCH	MM	MM	(SQ)
1	RST-045135	0.045	1.10	0.135	3.40	0.012	0.30	3.30	1.40
2	RST-060080	0.060	1.50	0.080	2.00	0.010	0.25	3.30	1.40
3	RST-100125	0.100	2.50	0.125	3.15	0.016	0.40	3.30	1.40
4	RST-120140	0.120	3.00	0.140	3.50	0.016	0.40	3.30	1.40
5	RST-150180	0.150	3.80	0.180	4.50	0.016	0.40	3.30	1.40
7	RST-040150	0.040	1.00	0.150	3.75	0.008	0.20	3.30	1.40
8	RST-060140	0.060	1.50	0.140	3.50	0.016	0.40	3.30	1.40
9	RST-100175	0.100	2.50	0.175	4.44	0.002	0.40	3.30	1.40

Square without Relief, RSE-xxx-NR

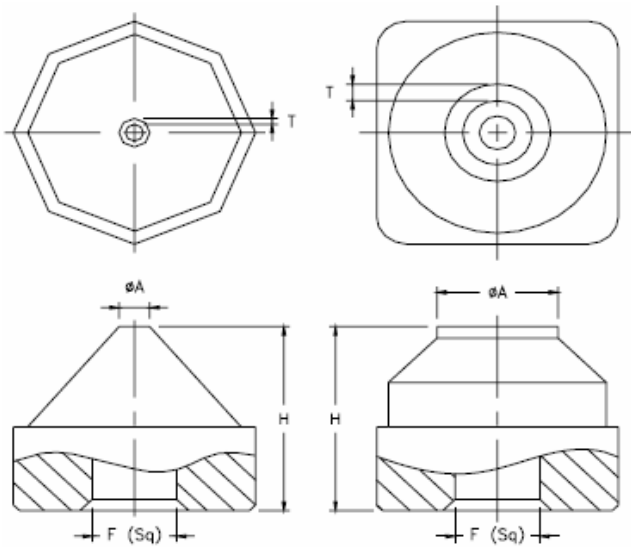


Type : Square without Relief
Material : NBR

T - Wall Thickness
H - Height
F - Fitting

Standard Part number	Part Number	Diameter (ØA)		T		H	F
		INCH	MM	MM	INCH	MM	(SQ)
1	RSE-030016-NR	0.0300	0.75	0.016	0.40	3.30	1.40
2	RSE-040020-NR	0.040	1.00	0.020	0.50	3.30	1.40
3	RSE-050020-NR	0.050	1.25	0.020	0.50	3.30	1.40
4	RSE-058028-NR	0.058	1.47	0.028	0.70	3.30	1.40
5	RSE-039016-NR	0.039	1.00	0.016	0.40	3.30	1.40

Non-Standard Round, RRD-xxx



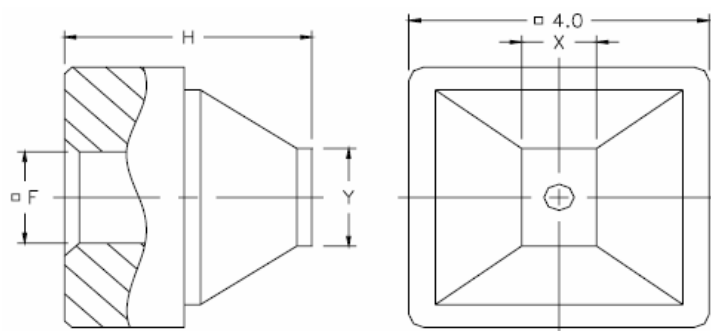
Type : Round
Non Standard Round Type

Material : NBR
T - Wall Thickness
H - Height
F - Fitting

Standard Part number	Diameter (ϕA)	T	H	F
Part Number	INCH MM	MM INCH	MM	(SQ)
**1 RRD-025008	0.025 0.63	0.008 0.200	3.30	1.40
**2 RRD-028012	0.028 0.70	0.008 0.200	3.30	1.40
**3 RRD-035016	0.035 0.89	0.010 0.250	3.30	1.40
**4 RRD-045020	0.045 1.14	0.013 0.318	3.30	1.40

** (**1 - **4) Below 50mil - Non Relief at Top Surface (Full Contact)

Rectangular without Relief, RTA-xxx

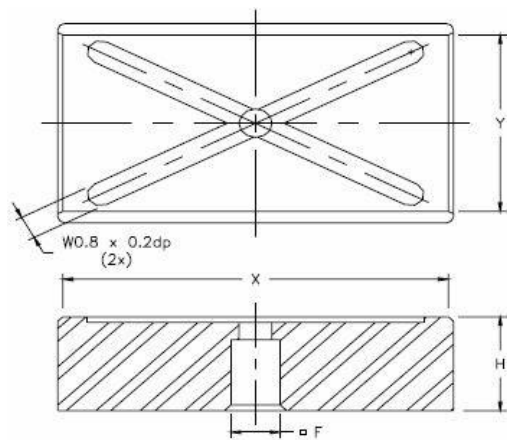


Type : Rectangular without Relief
Material : NBR

T - Wall Thickness
H - Height
F - Fitting

Standard Part number	Part Number	X	Y	T	H	F
		INCH MM	INCH MM	INCH MM	MM	(SQ)
1	RTA-030045-NR	0.030 0.75	0.045 1.15	0 0	3.30	1.40
2	RTA-040060-NR	0.040 1.00	0.060 1.50	0 0	3.30	1.40

Thin Dies, X-Groove Tips



Type : X-GROOVE

Material : NBR

H - Height

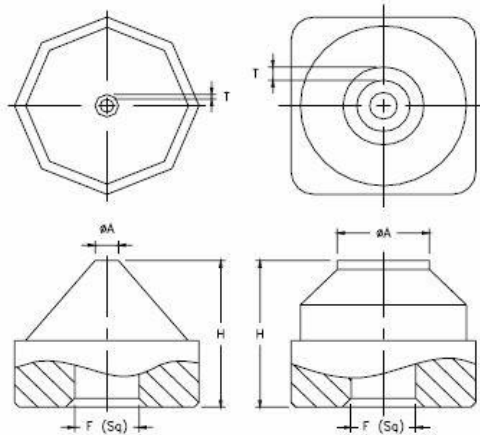
F - Fitting



Standard Part number		X		Y		H	F
Part	Number	INCH	MM	INCH	MM	MM	(SQ)
1	CRST-157196S-NR	0.196	5.00	0.157	4.00	3.30	1.50
2	CRST-100300S-NR	0.300	7.62	0.100	2.54	3.30	2.50
3	CRST-150200S-NR	0.200	5.08	0.150	3.81	3.30	2.50
4	CRST-150250S-NR	0.250	6.35	0.150	3.81	3.30	2.50
5	CRST-150275S-NR	0.275	6.99	0.150	3.81	3.30	2.50
6	CRST-150300S-NR	0.300	7.62	0.150	3.81	3.30	2.50
7	CRST-175200S-NR	0.200	5.08	0.175	4.44	3.30	2.50
8	CRST-175250S-NR	0.250	6.35	0.175	4.44	3.30	2.50
9	CRST-175300S-NR	0.300	7.62	0.175	4.44	3.30	2.50
10	CRST-175350S-NR	0.350	8.89	0.175	4.44	3.30	2.50
11	CRST-190360S-NR	0.360	9.14	0.190	4.83	3.30	2.50
12	CRST-200250S-NR	0.250	6.35	0.200	5.08	3.30	2.50
13	CRST-200275S-NR	0.275	6.99	0.200	5.08	3.30	2.50
14	CRST-200300S-NR	0.300	7.62	0.200	5.08	3.30	2.50
15	CRST-225300S-NR	0.300	7.62	0.225	5.71	3.30	2.50
16	CRST-225375S-NR	0.375	9.53	0.225	5.71	3.30	2.50
17	CRST-250450S-NR	0.450	11.43	0.250	6.35	3.30	2.50
18	CRST-320340S-NR	0.340	8.64	0.320	8.13	3.30	2.50
19	CRSE-150040S-NR	0.150	3.81	0.150	3.81	3.30	2.50
20	CRST-100250S-NR	0.250	6.35	0.100	2.54	3.30	2.50
21	CRST-160350S-NR	0.350	8.89	0.160	4.06	3.30	2.50
22	CRST-180315S-NR	0.315	8.00	0.180	4.57	3.30	2.50
23	CRST-215325S-NR	0.325	8.25	0.215	5.46	3.30	2.50
24	CRST-250350S-NR	0.350	8.89	0.250	6.35	3.30	2.50
25	CRST-250300S-NR	0.300	7.62	0.250	6.35	3.30	2.50
26	CRST-250325S-NR	0.325	8.25	0.250	6.35	3.30	2.50
27	CRST-275300S-NR	0.300	7.62	0.275	6.99	3.30	2.50
28	CRSE-300040S-NR	0.300	7.62	0.300	7.62	3.30	2.50
29	CRST-200325S-NR	0.325	8.25	0.200	5.08	3.30	2.50
30	CRST-350475S-NR	0.475	12.06	0.350	8.89	3.30	2.50
31	CRST-195222S-NR	0.222	5.65	0.195	4.95	3.30	2.50

Micro Tips Round, MRRD-xxx

MRRD-XXX



Type : Micro (Round)

Material : NBR

T - Wall Thickness

H - Height

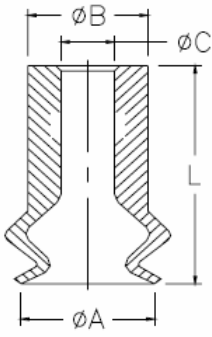
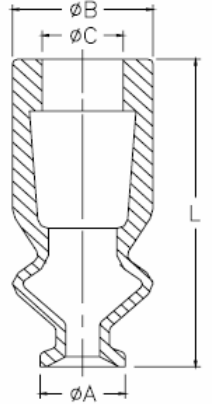
F - Fitting

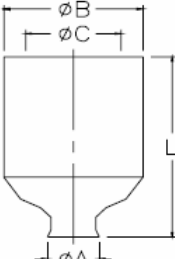
Standard Part number Part Number	Diameter ($\varnothing A$)		T		H	F
	INCH	MM	MM	INCH	MM	MM (SQ)
1 MRRD-010004	0.010	0.25	0.003	0.076	3.30	1.40
2 MRRD-010006	0.010	0.25	0.002	0.050	3.30	1.40
3 MRRD-012006	0.012	0.30	0.003	0.076	3.30	1.40
4 MRRD-012008	0.012	0.30	0.002	0.050	3.30	1.40
5 MRRD-015006	0.015	0.38	0.0045	0.114	3.30	1.40

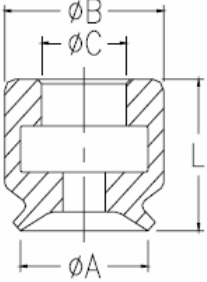
Suction Cups for general purpose

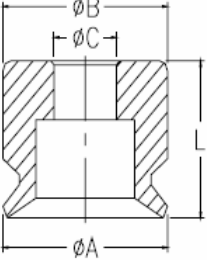
The suction cups are used mainly for molded package handling as well as lead frame handling or similar applications. The cups are electrical dissipative with a resistance in the range of 10e6 to 10e9 Ohms.

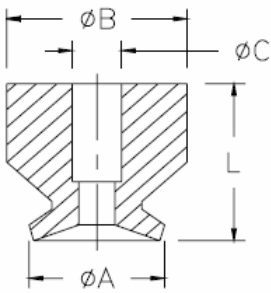


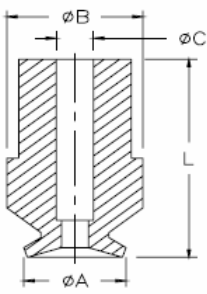
	Part No .	ØA	ØB	ØC	L
	VCP-5AE-B	5.0	4.5	2.0	9.0
	VSPB-8-4	3.5	3.3	1.1	8.0
	VSPB-16-4AE	4.0	6.6	3.8	16.0

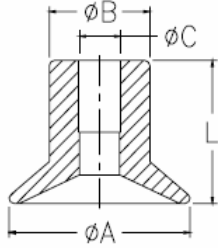
	Part No .	ØA	ØB	ØC	L
	SUC-12-2.6AE	2.6	7.0	4.8	12.0
	SUC-12-4.8AE	4.8	7.0	4.8	12.0
	SUC-12-7AE	7.0	7.0	4.8	12.0

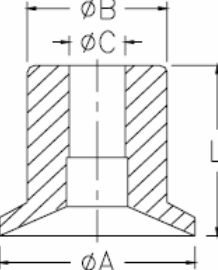
	VCP-3.5AE	3.5	4.0	2.0	4.0
	VCP-5AE	5.0	7.5	4.0	6.5
	VCP-6AE	6.0	7.5	4.0	6.5
	VCP-8AE	8.0	8.0	4.0	7.0

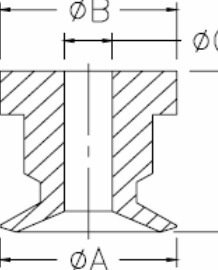
	VCP-C-8AE	8.0	6.0	2.5	5.5
	VCP-B-10AE	10.0	10.0	3.8	8.0
	VCP-15AE	15.0	11.0	4.8	8.0

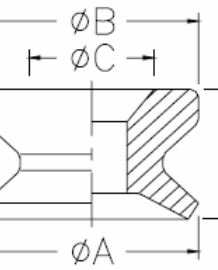
	SUC-4-2	2.0	4.0	1.1	4.0
	SUC-4-3	3.0	4.0	1.1	4.0
	SUC-4-4	4.0	4.0	1.1	4.0
	SUC-4-6	6.0	4.0	1.1	4.0

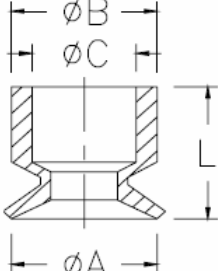
	SUC-8-2	2.0	4.0	1.1	8.0
	SUC-8-3	3.0	4.0	1.1	8.0
	SUC-8-4	4.0	4.0	1.1	8.0

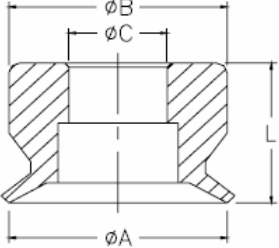
	Part No .	ØA	ØB	ØC	L
	VSPS-7-9AE	9.0	5.0	2.1	7.0
	VSPS-5-10AE	10.0	2.5	1.1	5.0
	VSPS-7-14AE	14.0	4.0	1.8	7.0

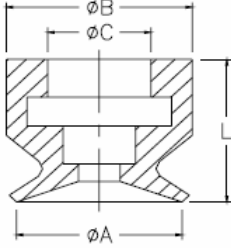
	VSPS-6.5-7AE	7.0	5.0	2.0	6.5

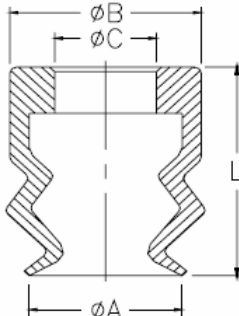
	VSP-5.5-5.5AE	5.5	5.5	1.5	5.5

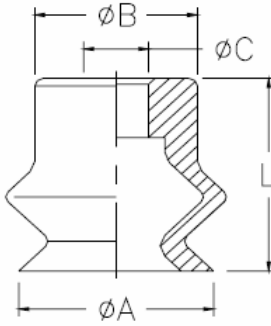
	VSP-4A-6AE	6.0	6.0	3.5	4.0

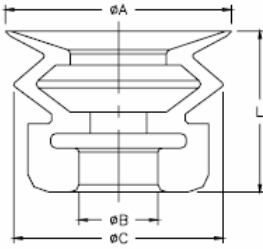
	VCP-B-3.5AE	3.5	3.5	2.5	3.5

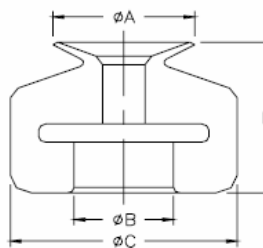
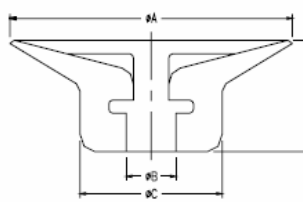
	Part No .	ØA	ØB	ØC	L
	VCP-10AE	10.0	10.0	4.5	7.0

	Part No .	ØA	ØB	ØC	L
	VCP-B-8AE	8.0	9.0	5.0	7.5

	Part No .	ØA	ØB	ØC	L
	VCP-6AE-B	6.0	7.5	4.0	9.0

	Part No .	ØA	ØB	ØC	L
	VCP-B-6AE-B	6.0	5.0	2.0	6.5

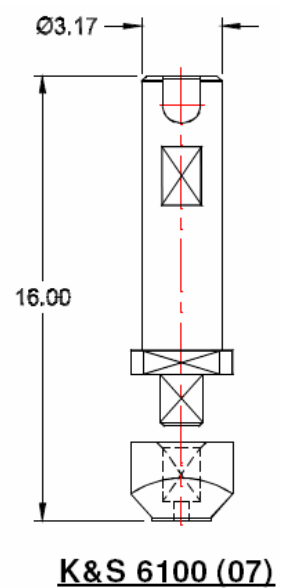
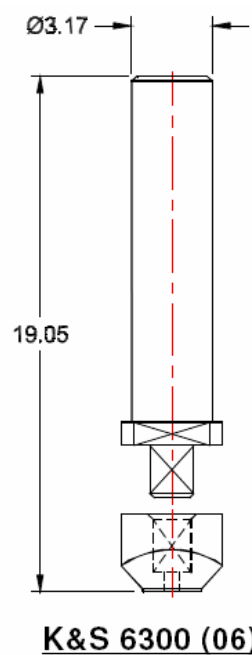
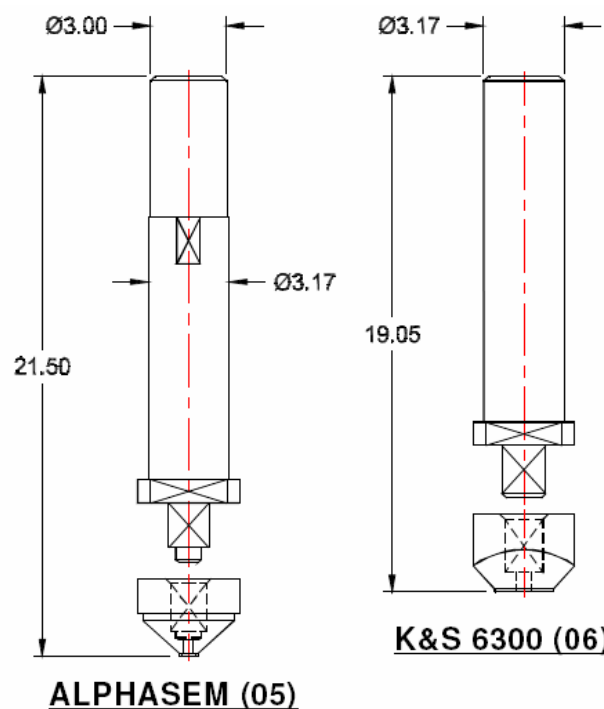
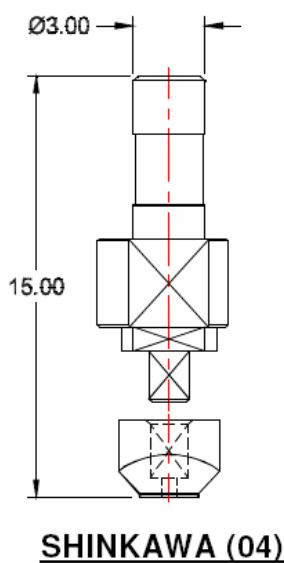
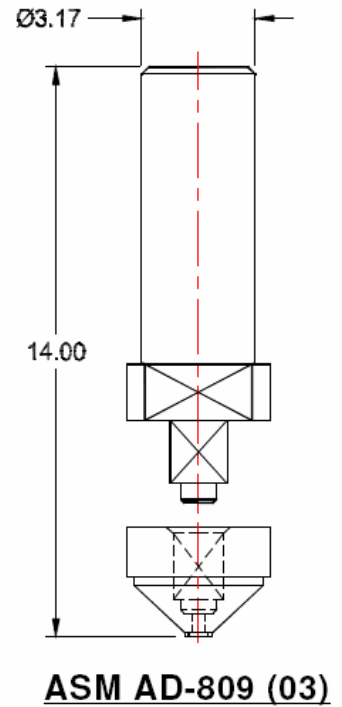
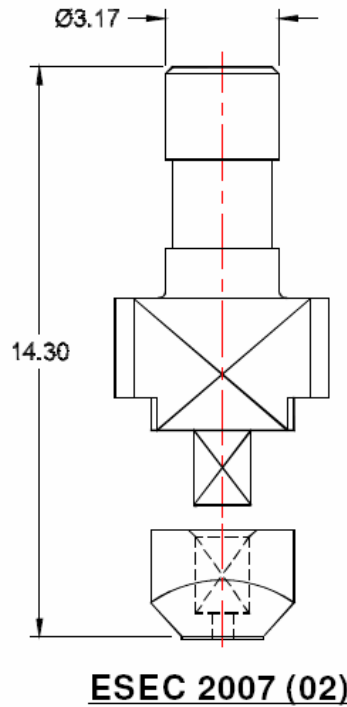
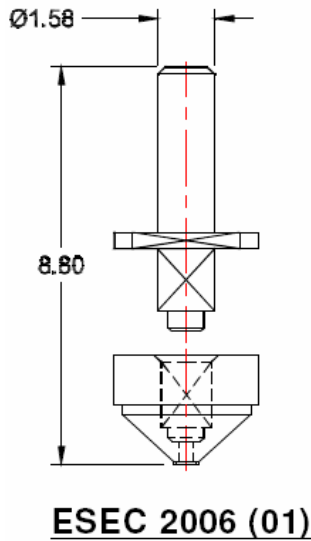
	Part No .	ØA	ØB	ØC	L
S - series : 	SC-4S	4.0	5.0	7.3	15.0
	SC-6S	6.0	5.0	9.3	15.0
	SC-8S	8.0	5.0	11.3	16.0
	SC-10S	10.0	7.0	12.0	17.3
	SC-15S	15.0	7.0	12.0	17.0
	SC-20S	20.0	7.0	12.0	16.5
	SC-25S	25.0	7.0	12.0	16.0
	SC-30S	30.0	7.0	12.0	16.4
	SC-40S	40.0	7.0	12.0	16.0
	(Bellow type)				

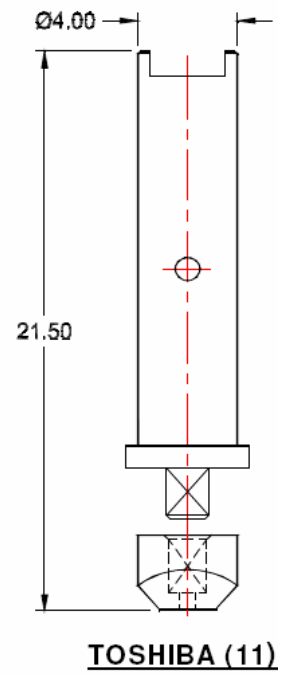
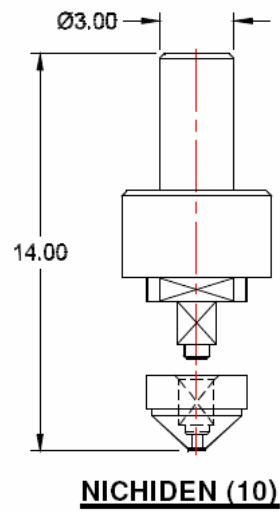
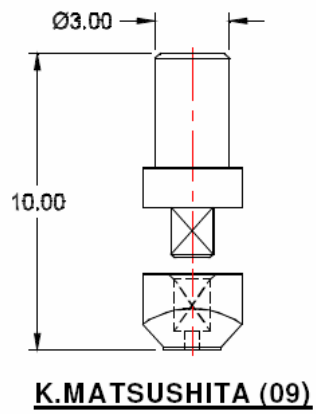
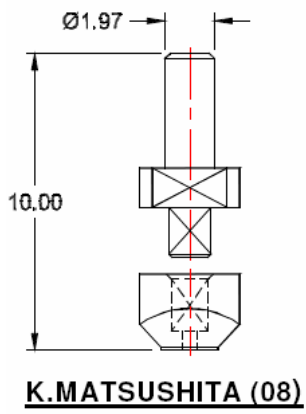
N - series :  	SC-4N	4.0	5.0	12.0	12.5
	SC-5N	5.0	6.8	11.8	17.0
	SC-6N	6.0	6.8	18.0	17.0
	SC-7N	7.0	5.2	12.0	14.0
	SC-10N	10.0	7.0	16.0	13.1
	SC-15N	15.0	7.0	16.0	12.8
	SC-20N	20.0	7.0	15.8	12.5
	SC-25N	25.0	7.0	16.0	13.0
	SC-30N	30.0	7.5	16.0	14.0
	SC-40N	40.0	7.0	20.1	13.0
	SC-50N	50.0	7.0	24.0	13.0

Rubber Tip Holder

We offer both standard and customized Rubber Tip Holders for all well-known Die Bond Manufacturer.

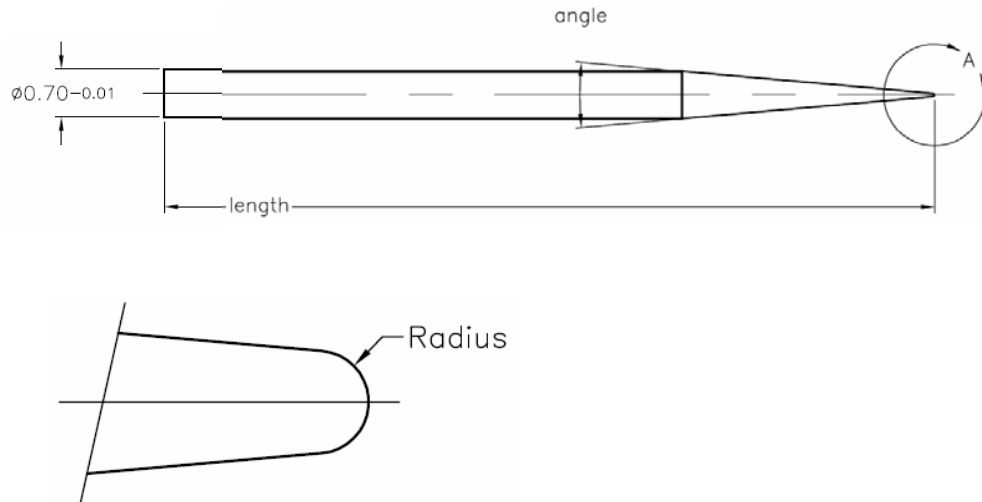
Choose the shank style below or on the next page, add changes if necessary, and tell us what tip you are using.





Ejector Needle/Pin (Carbide, Stainless Steel. Custom made, etc.)

The Die Ejector Pins/Needles have usually 0.7 mm Diameter, which is a standard. 0.5 and 1.0 mm are available too.



Ordering Information

Angle = A
Radius = R
Length = L
Diameter = D (needle diameter)

Material Code:
H = High Speed Steel
S = Carbide
C = Piano Wire

Product Code	Material Code	Shank Diameter	Dimensional Specification			Ordering Example
			Angle (A)	Radius(R)	Length (L)	
EP	H	0.70 mm	15deg	0.250mm	17.00mm	EPH-15-250-170
EP	C	0.40 mm	10deg	0.015mm	14.30mm	EPC04-10-015-143
EP	S	1.00 mm	25deg	0.500mm	19.05mm	EPS10-25-500-1905

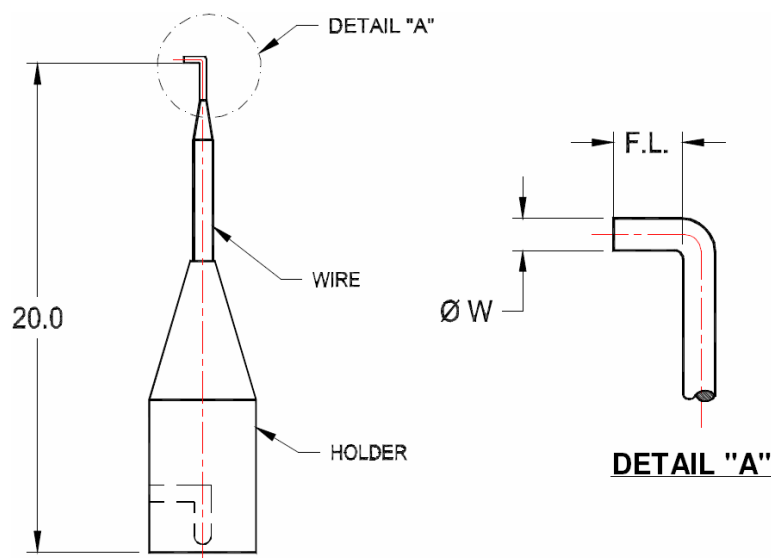
The material code refers to the actual needle size. There are many different available. Please contact us to get a list or just tell us about the sizes.

Wirehook for Pulltesting

For Dage and Royce, custom made

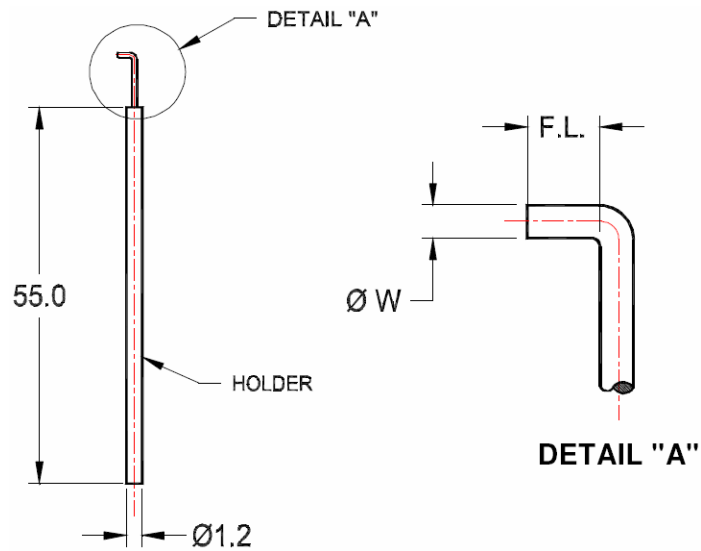


Dage Wire Hook Short



	Partnumber	Footlength (mm)	Wirediameter (mm)
1	WH-90S-02-010-1	0.05	0.025
2	WH-90S-05-010-1	0.13	0.025
3	WH-90S-05-020-1	0.13	0.051
4	WH-90S-05-020-2	0.127	0.051
5	WH-90S-05-025-1	0.130	0.064
6	WH-90S-05-030-1	0.130	0.076
7	WH-90S-06-040	0.15	0.102
8	WH-90S-06-010	0.15	0.025
9	WH-90S-06-030-1	0.15	0.076
10	WH-90S-06-050	0.15	0.127
11	WH-90S-07-040-1	0.13	0.100
12	WH-90S-08-020	0.20	0.050
13	WH-90S-08-020-1	0.20	0.050
14	WH-90S-08-025-1	0.20	0.064
15	WH-90S-08-030-1	0.20	0.076
16	WH-90S-10-030-1	0.25	0.076
17	WH-90S-10-060-1	0.254	0.152

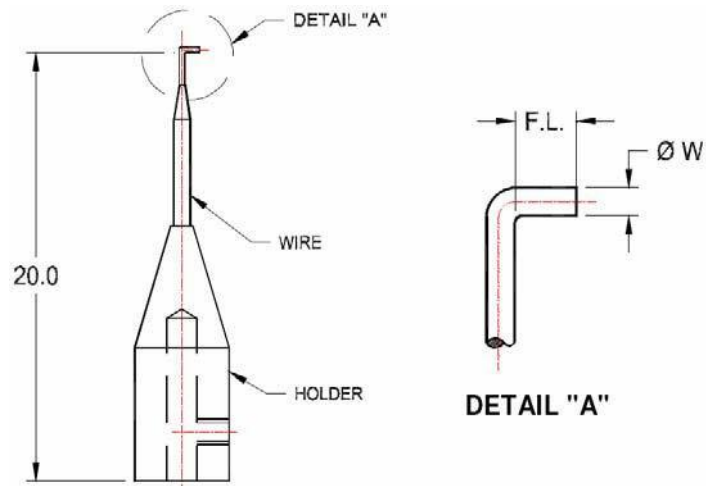
Dage Wire Hook Long



	Partnumber	Footlength (mm)	Wirediameter (mm)
1	WH-91L-02-010	0.050	0.025
2	WH-91L-03-010-1	0.080	0.025
3	WH-91L-03-020-1	0.080	0.050
4	WH-91L-05-008	0.130	0.020
5	WH-91L-05-010	0.130	0.025
6	WH-91L-05-010-1	0.130	0.025
7	WH-91L-05-020	0.130	0.050
8	WH-91L-05-020-1	0.130	0.050
9	WH-91L-05-025-1	0.130	0.064
10	WH-91L-05-030	0.130	0.076

And many more. Please contact us by providing the preferred dimensions.

Royce Hook



	Partnumber	Footlength (mm)	Wire diameter (mm)
1	WH-95-02-015	0.050	0.038
2	WH-95-03-010	0.076	0.025
3	WH-95-05-010	0.130	0.025
4	WH-95-05-020	0.130	0.050
5	WH-95-05-030	0.130	0.076
6	WH-95-05-040	0.127	0.102
7	WH-95-05-050	1.127	0.127
8	WH-95-06-030	0.150	0.076
9	WH-95-08-020	0.200	0.020
10	WH-95-08-030	0.200	0.076

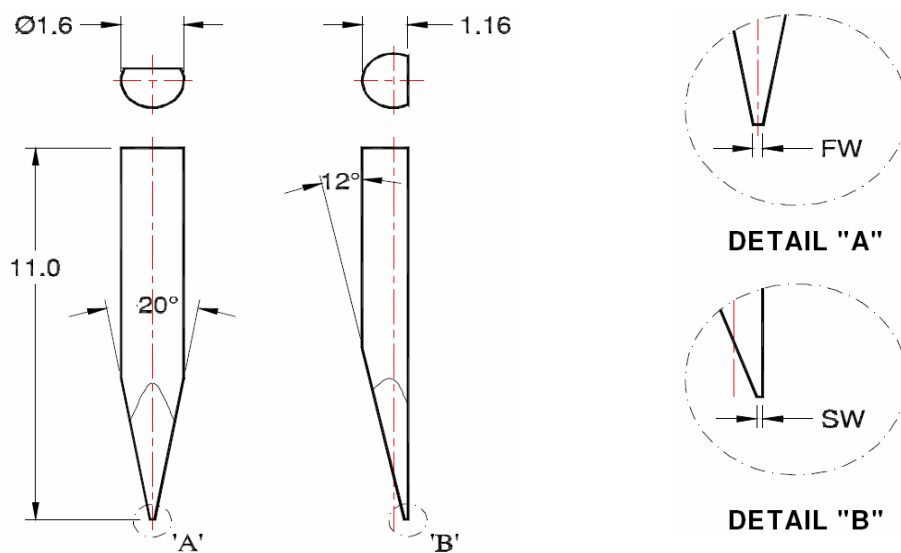
And many more. Please specify dimensions or provide wire diameter, pitching and foot length.

Ballshearpin BSP-xxx

Carbide, Stainless Steel. Custom made, etc.



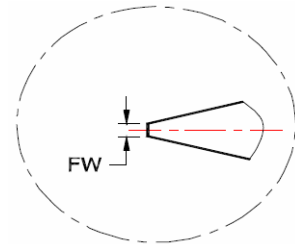
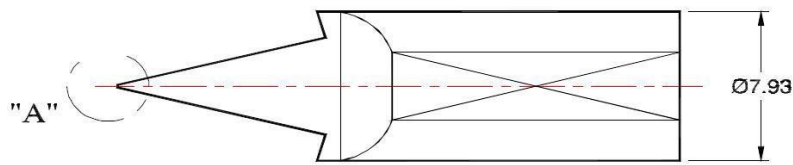
Dage



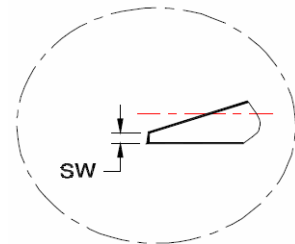
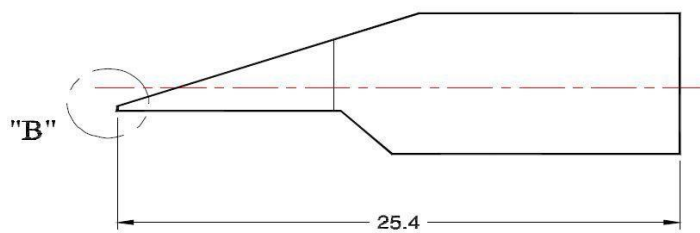
	Part Number	Face Width (FW)		Side Width (SW)	
		mm	mils	mm	mils
1	BSP-91-020040-01	0.05	2	0.10	4
2	BSP-91-030040-01	0.076	3	0.10	4
3	BSP-91-040040-01	0.100	4	0.10	4
4	BSP-91-050040-01	0.127	5	0.10	4
5	BSP-91-060040-01	0.150	6	0.10	4
6	BSP-91-080050-01	0.200	8	0.13	5
7	BSP-91-100100-01	0.250	10	0.25	10
8	BSP-91-120100-01	0.300	12	0.25	10
9					
	Etc.				

Contact us for new sizes. Please specify Gold/Aluminium/Copper Wire diameter and wirepitch.

Royce Instruments



DETAIL "A"



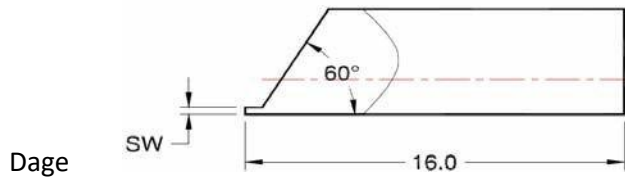
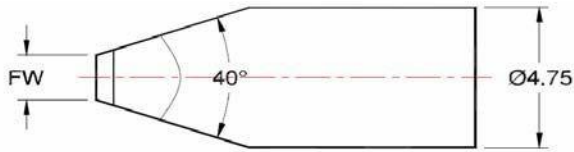
DETAIL "B"

	Part Number	Face Width (FW)		Side Width (SW)	
		mm	mils	mm	mils
1	BSP-95-020040-01	0.050	2	0.10	4
2	BSP-95-020200-01	0.050	2	0.25	10
3	BSP-95-030100-01	0.760	3	0.25	10
4	BSP-95-040100-01	0.100	4	0.25	10
5	BSP-95-050100-01	0.127	5	0.25	10
6	BSP-95-060100-01	0.150	6	0.25	10
7					
8					
	Etc.				

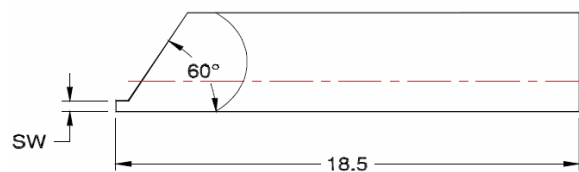
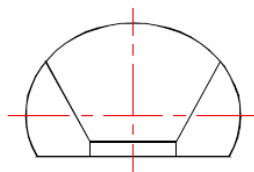
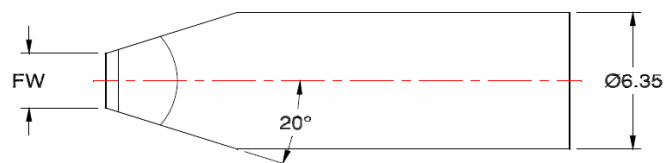
Contact us for new sizes. Please specify Gold/Aluminium/Copper Wire diameter and wirepitch.

Dieshearpin DSP-xxx

Carbide, Stainless Steel. Custom made, etc.



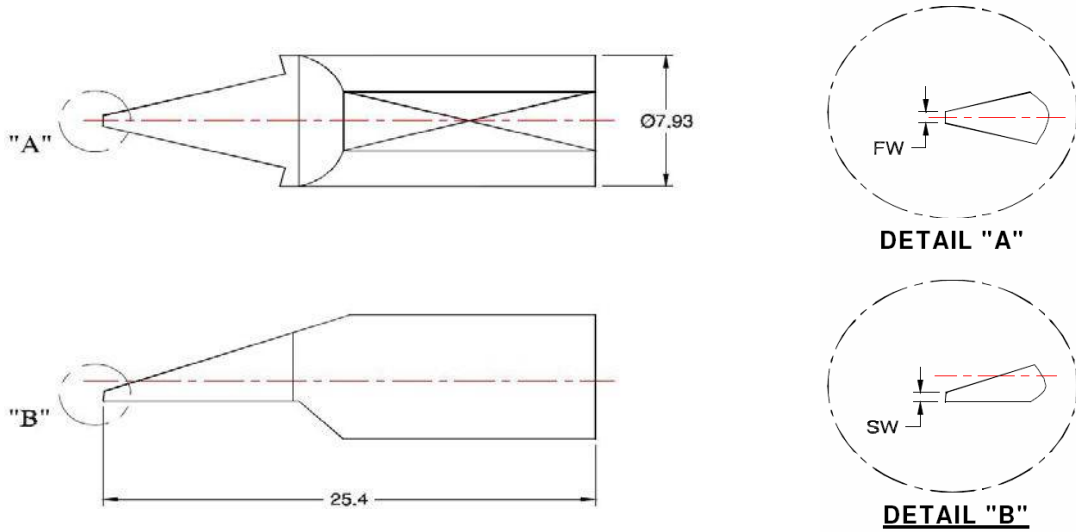
	Part Number	Face Width (FW)		Side Width (SW)	
		mm	mils	mm	mils
1	DSP-91-010010-01	0.25	10	0.25	10
2	DSP-91-020010-01	0.50	20	0.25	10
3	DSP-91-030010-01	0.76	30	0.25	10
4	DSP-91-040010-01	1.00	40	0.25	10
5	DSP-91-050010-01	1.27	50	0.25	10
6	DSP-91-060040-01	1.50	60	0.25	10



	Part Number	Face Width (FW)		Side Width (SW)	
		mm	mils	mm	mils
1	DSP-91A-050020-01	1.27	50	0.50	20
2	DSP-91A-070020-01	1.80	70	0.50	20
3	DSP-91A-100010-01	2.50	100	0.50	20
4	DSP-91A-150020-01	3.80	150	0.50	20
5	DSP-91A-200010-01	5.60	220	0.50	20

Die Shear Pin

Royce Instruments



	Part Number	Face Width (FW)		Side Width (SW)	
		mm	mils	mm	mils
1	DSP-95-015010-01	0.38	15	0.25	10
2	DSP-95-020010-01	0.50	20	0.25	10
3	DSP-95-030010-01	0.76	30	0.25	10
4	DSP-95-040010-01	1.00	40	0.25	10
5	DSP-95-050010-01	1.27	50	0.25	10
6	DSP-95-050010-01	1.50	60	0.25	10
5	DSP-95-050010-01	1.80	70	0.25	10

Custom Made

Please provide various information such as

1. Tester Model
2. Pitching
3. Ball/Die Size
4. Face/Side Width
5. Lengths/Diameter of the tool
6. etc.

About Us:

Quasys offers sales and technical support for various applications in microelectronics, semiconductor and SMT / EMS industry:

- JEDEC tray and waffle pack feeder (own product)
- Die Bonder and -Sorter, plasma systems, test handlers, furnaces, etc. (sales and support)
- Burn-in and test sockets
- Bond Tools

History:

- 2014: Change of ownership, the new main shareholder is Powatec
- 2011: Change of ownership, the new main shareholder is Kurt Willimann
- 2008: Takeover of the feeder business of BESI / Datacon; production of JEDEC tray and waffle pack feeders now in Switzerland
- 2002: Opening of sales office in Milan (Sales Europe South)
- 2001: Foundation of Quasys GmbH Germany for equipment sales in Germany and Austria, and for sales of spare parts and bonding tools throughout Europe
- 1991 to 2000: Steady growth, expansion to 8 employees
- 1990: Additional co-owner by recording Peter Fanara
- 1989: Founding of Quasys AG by Beatrice Brunner and Ueli Meili

Approximately 10 employees serve customers throughout Europe.

We introduce ourselves:



Iris Wiedemann

- Clerk
- Secretary Quasys GmbH
- Sales Spare Parts
- Tools and Sockets

i.wiedemann@quasys.de



Karl-Heinz Gleixner

- Sales Administrator

k.gleixner@quasys.ch



Rolf Nussbaumer

- Management
- Feeder Team
- Sales

r.nussbaumer@quasys.ch



Kurt Kammermann

- Technical Manager
- Product Specialist
- Feeder Team

k.kammermann@quasys.ch



Paolo Peviani

- Area Sales Manager Southern Europe

p.peviani@quasys.ch



Jürgen Haap

- Area Sales Manager Mid/North-Europe

j.haap@quasys.de

Our Locations:

Switzerland:

QUASYS AG
Rothusstrasse 5A
CH-6331 Hünenberg

Phone +41 41 / 740 20 60
Telefax +41 41 / 741 62 13

E-mail: sales@quasys.ch

Germany:

QUASYS GmbH
Altweg 22
D-79356 Eichstetten

Phone +49 7663 / 6086-0
Telefax +49 7663 / 6086-11

E-mail: quasys@quasys.de